

MONTHLY MEMBERSHIP PROGRESS REPORT

District 12 S

Results as of: 5/31/2024

GMT:

LOCATION TENNESSEE

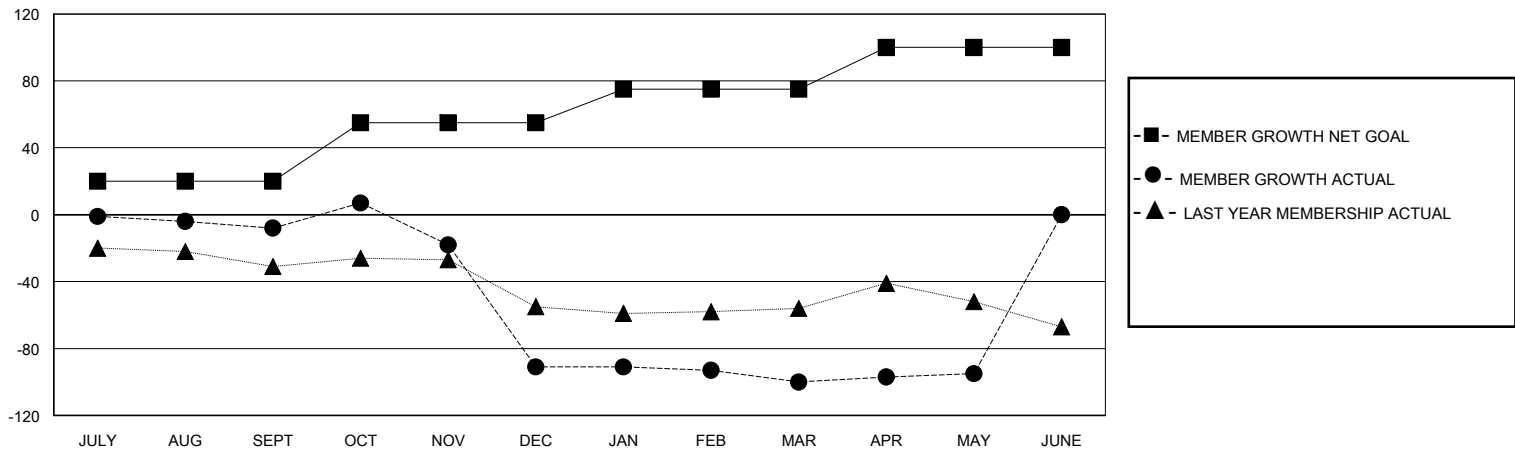
GMT CA

| Clubs | | | | Members | | | |
|-----------------------|---------------|-----------|---------------|-----------------------|------------------------|----------------------|--|
| RESULTS FOR 2023-2024 | | | | RESULTS FOR 2023-2024 | | | |
| QUARTER | NEW CLUB GOAL | NEW CLUBS | DROPPED CLUBS | QUARTER | MEMBER GROWTH NET GOAL | MEMBER GROWTH ACTUAL | DROPPED MEMBERS ACTUAL (including transfers) |
| JULY/AUG/SEPT | 0 | 0 | 0 | JULY/AUG/SEPT | 20 | 9 | 16 |
| OCT/NOV/DEC | 1 | 0 | 2 | OCT/NOV/DEC | 35 | 22 | 104 |
| JAN/FEB/MAR | 0 | 0 | 2 | JAN/FEB/MAR | 20 | 10 | 18 |
| APR/MAY/JUNE | 0 | 0 | 0 | APR/MAY/JUNE | 25 | 10 | 5 |

GOALS AND ACTUAL NEW CLUBS CUMULATIVE



GOALS AND ACTUAL MEMBERS CUMULATIVE



| | | |
|--|---|--|
| DROPPED CLUBS: 4 | 20 CLUBS OF 47 ADDED 1 OR MORE NEW MEMBERS | GENDER DISTRIBUTION MALE 501 (56.55%) FEMALE 385 (43.45%) |
| DROPPED MEMBERS DECEASED 14 CLUB CANCELLED 20 OTHER 109 TOTAL 143 | CLICK HERE FOR CUMULATIVE MEMBERSHIP DATA | TOTAL FAMILY UNIT MEMBERS 199 FAMILY MEMBERS PAYING HALF DUES 104 |